

SECTION J-J
SCALE 1 : 3

ITEM NO.	PART NUMBER	DESCRIPTION	QTY.
1	WAGNER BD125783E	Brake Rotor	1
2	5709K76	Tapered-Roller Bearing	1
3	5709K83	Tapered-Roller Bearing	1
4	5154T305	Spring-Loaded Rotary Shaft Seal	1
5	FM-EH009	CJ Dust Cap	1
6	100-7708	ARP Wheel Studs M12 x 1.5	4
7	CWLM003GM	M12x1.5 Lug Nuts	4
8	91280A088	Medium-Strength Class 8.8 Steel Hex Head Screw M8x1.25	4
9	90592A022	Steel Hex Nut	6
10	90407A117	Spring Lock Washer	1
11	SPINDLE	1966 Original Spindle	1
12	Custom Hub		1
13	95030A250	Low-Strength Steel Locknut	1
14	141.42062	Brake Calliper	1
15	Custom Mount	Compatible with 141.42062	1
16	91280A089	Medium-Strength Class 8.8 Steel Hex Head Screw	2

UNLESS OTHERWISE SPECIFIED:
 DIMENSIONS ARE IN INCHES
 TOLERANCES:
 FRACTIONAL ±
 ANGULAR: MACH ±.1
 TWO PLACE DECIMAL ±.05
 THREE PLACE DECIMAL ±.001

DRAWN BY: V. JASHARI
PROPRIETARY AND CONFIDENTIAL
 THE INFORMATION CONTAINED IN THIS DRAWING IS THE SOLE PROPERTY OF DREAMTEAM INC. ANY REPRODUCTION IN PART OR AS A WHOLE WITHOUT THE WRITTEN PERMISSION OF DREAMTEAM INC IS PROHIBITED.

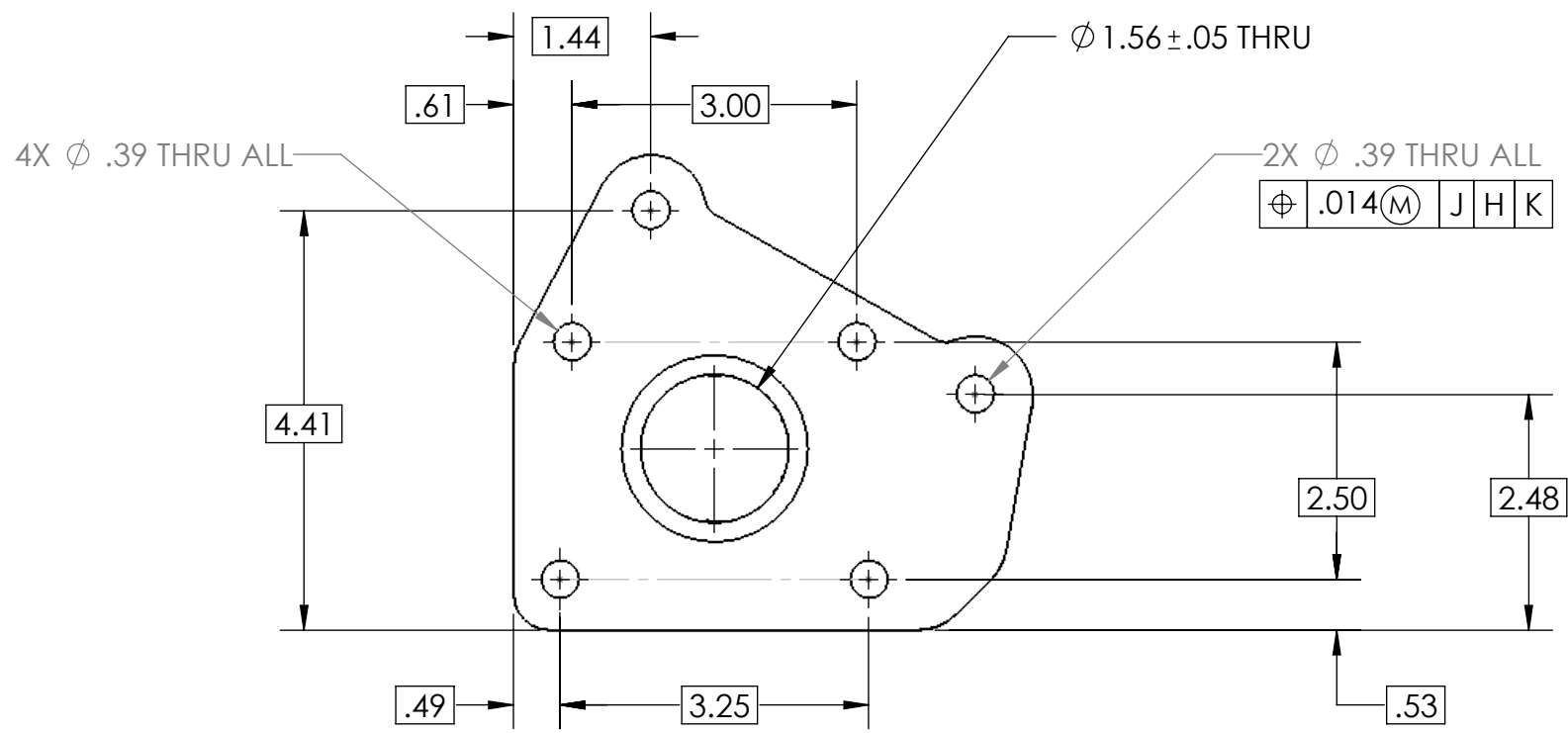
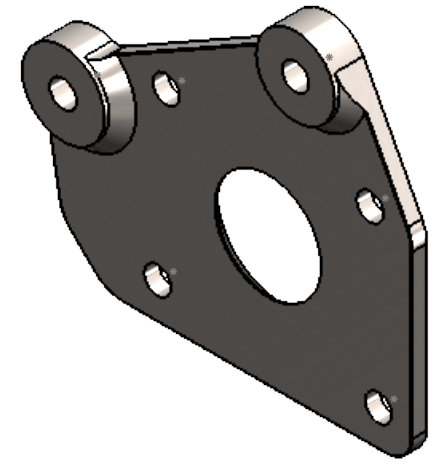
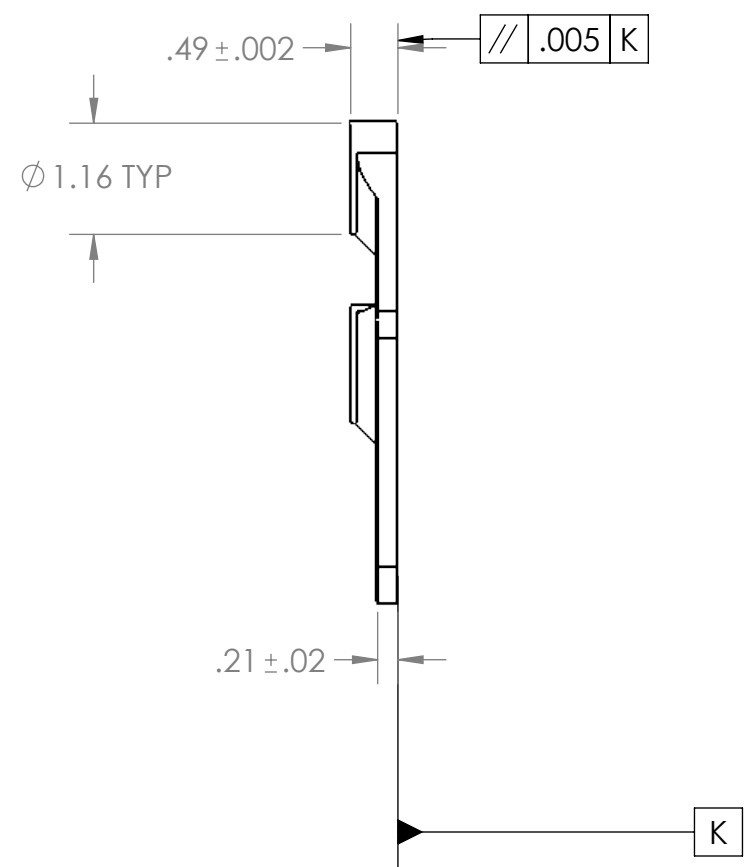
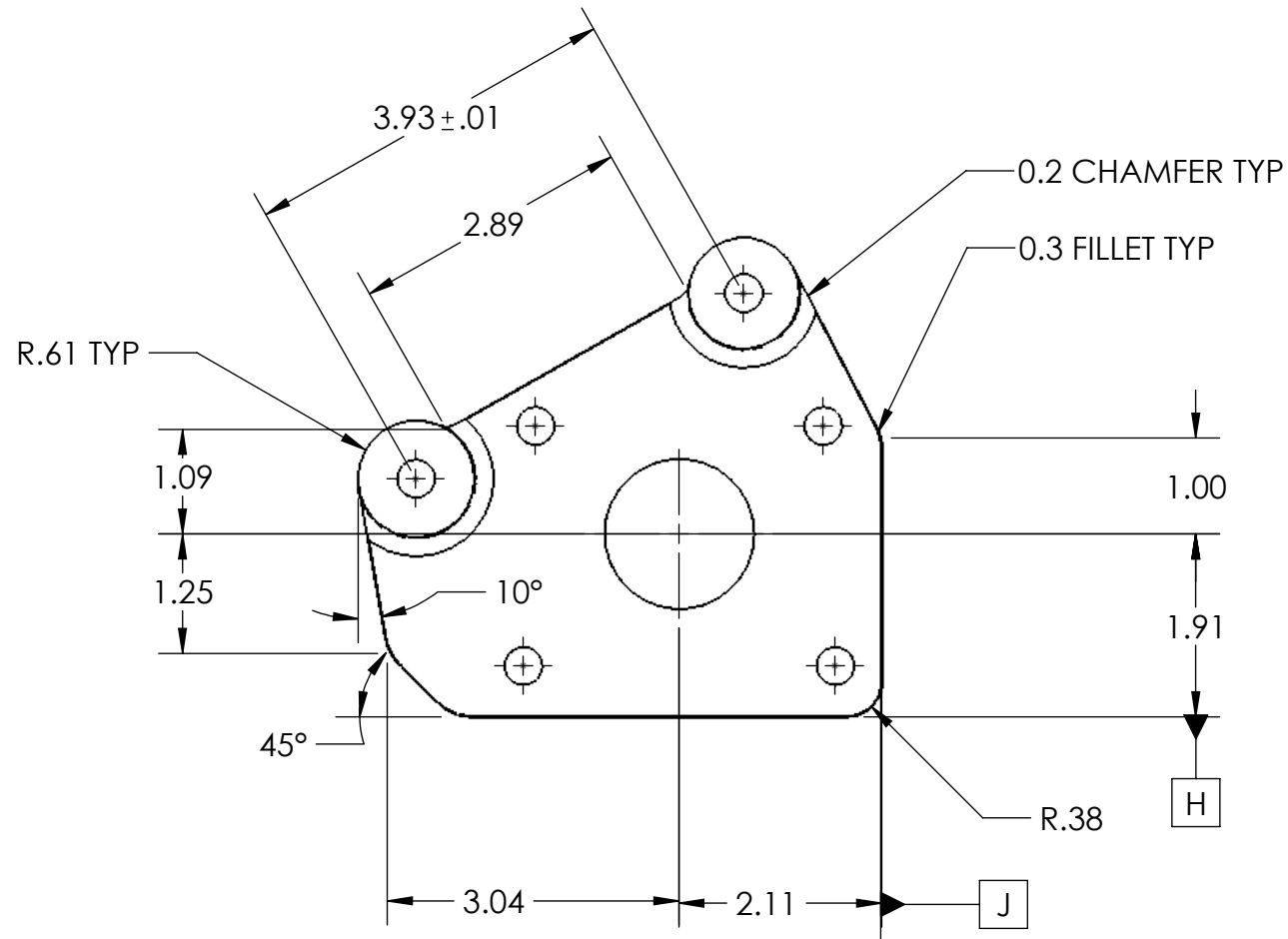
UNLESS OTHERWISE SPECIFIED:			Manufacturing and Automation		
DIMENSIONS ARE IN INCHES TOLERANCES: FRACTIONAL ± ANGULAR: MACH ±.1 TWO PLACE DECIMAL ±.05 THREE PLACE DECIMAL ±.001			TITLE: Disc Brake Kit		
INTERPRET GEOMETRIC TOLERANCING PER: ASME Y14.5M-2009	MATERIAL	FINISH	SIZE B	DWG. NO. Assembly	REV
DO NOT SCALE DRAWING			SCALE: 1:3		SHEET 1 OF 4

4

3

2

1



UNLESS OTHERWISE SPECIFIED:		Manufacturing and Automation	
DIMENSIONS ARE IN INCHES		TITLE:	
TOLERANCES:		Calliper Mount	
FRACTIONAL ±		SIZE	DWG. NO.
ANGULAR: MACH ± .1		B	1
TWO PLACE DECIMAL ± .05		SCALE: 1:1	REV
THREE PLACE DECIMAL ± .001		DO NOT SCALE DRAWING	SHEET 2 OF 4
DRAWN BY: V. JASHARI			
PROPRIETARY AND CONFIDENTIAL THE INFORMATION CONTAINED IN THIS DRAWING IS THE SOLE PROPERTY OF DREAMTEAM INC. ANY REPRODUCTION IN PART OR AS A WHOLE WITHOUT THE WRITTEN PERMISSION OF DREAMTEAM INC IS PROHIBITED.			

3

2

1

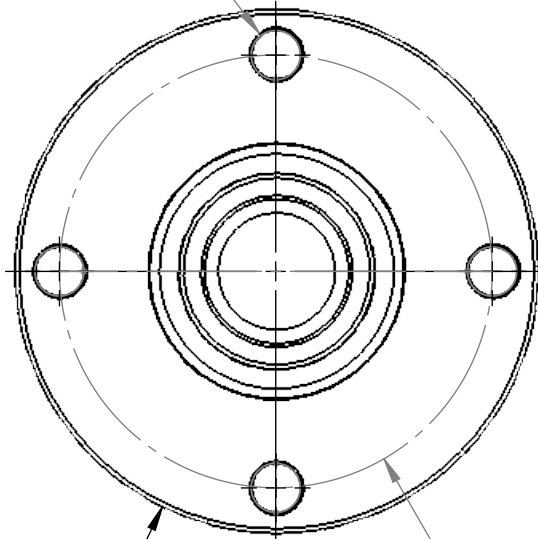
4

3

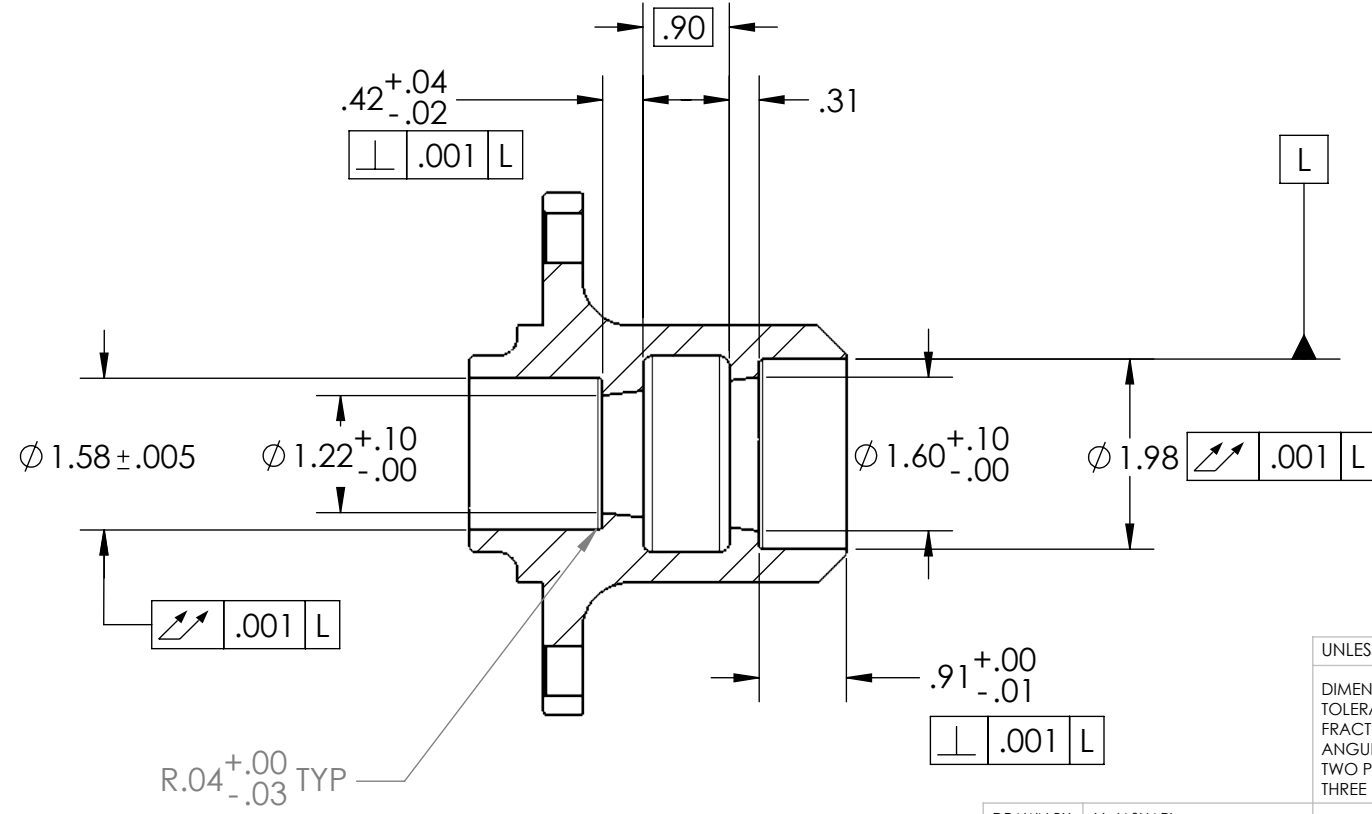
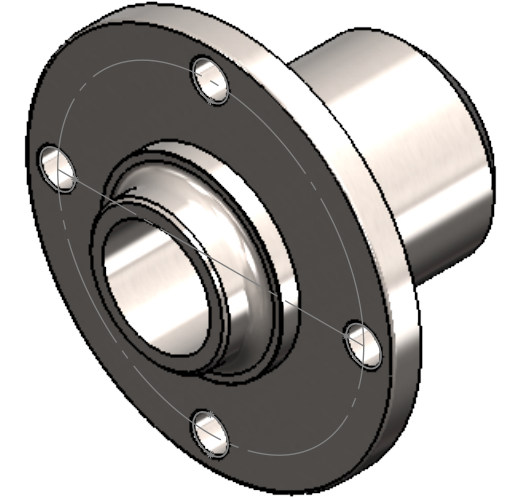
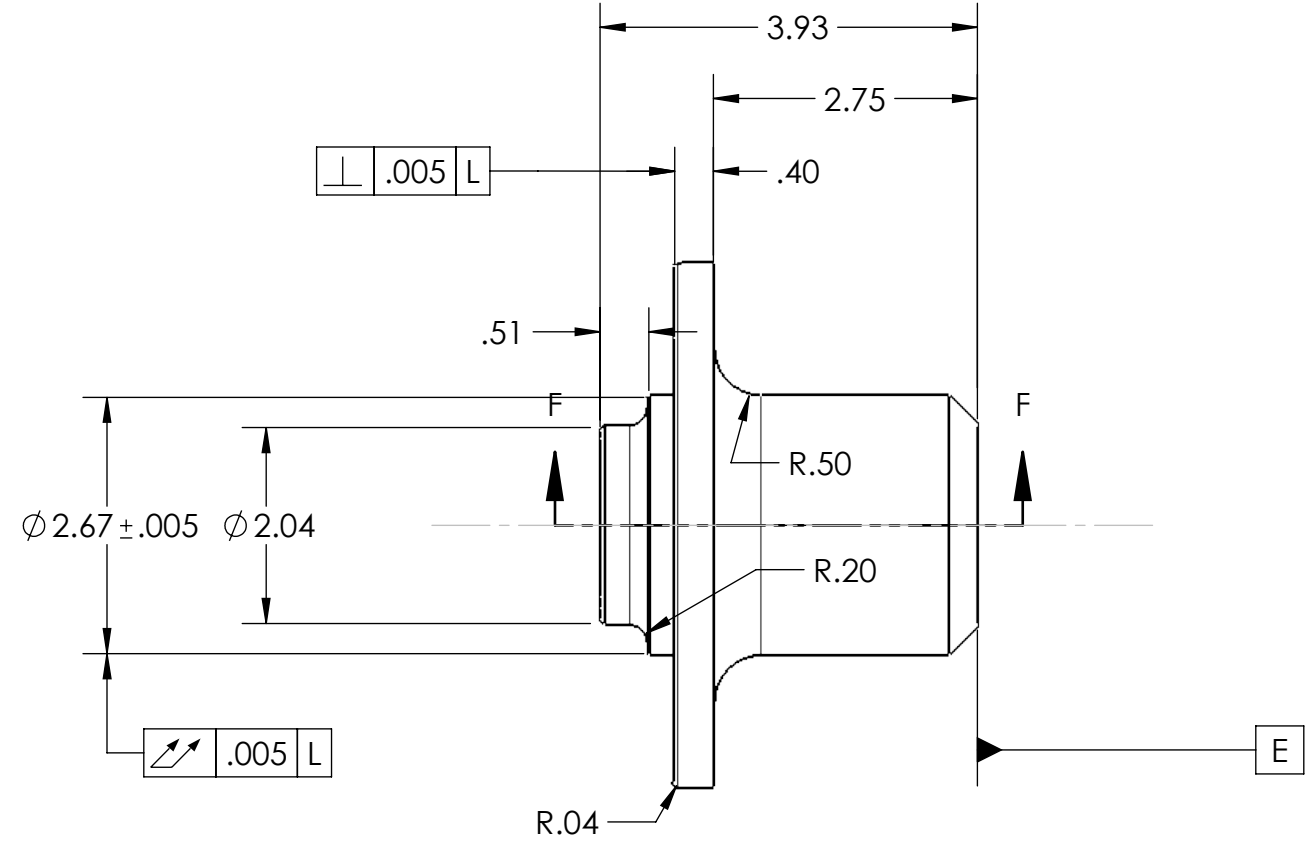
2

1

4X Ø .52 THRU ALL
Ø .57 X 90°, NEAR SIDE



Ø 5.43
Ø 4.51



SECTION F-F

UNLESS OTHERWISE SPECIFIED:
DIMENSIONS ARE IN INCHES
TOLERANCES:
FRACTIONAL ±
ANGULAR: MACH ±.1
TWO PLACE DECIMAL ±.05
THREE PLACE DECIMAL ±.001

Manufacturing and Automation

TITLE:
Brake Hub

DRAWN BY: V. JASHARI
PROPRIETARY AND CONFIDENTIAL
THE INFORMATION CONTAINED IN THIS DRAWING IS THE SOLE PROPERTY OF DREAMTEAM INC. ANY REPRODUCTION IN PART OR AS A WHOLE WITHOUT THE WRITTEN PERMISSION OF DREAMTEAM INC IS PROHIBITED.

INTERPRET GEOMETRIC TOLERANCING PER:
MATERIAL
4140 Steel
FINISH

SIZE **B** DWG. NO. **2** REV

DO NOT SCALE DRAWING SCALE: 1:2 SHEET 3 OF 4

3

2

1

4

3

2

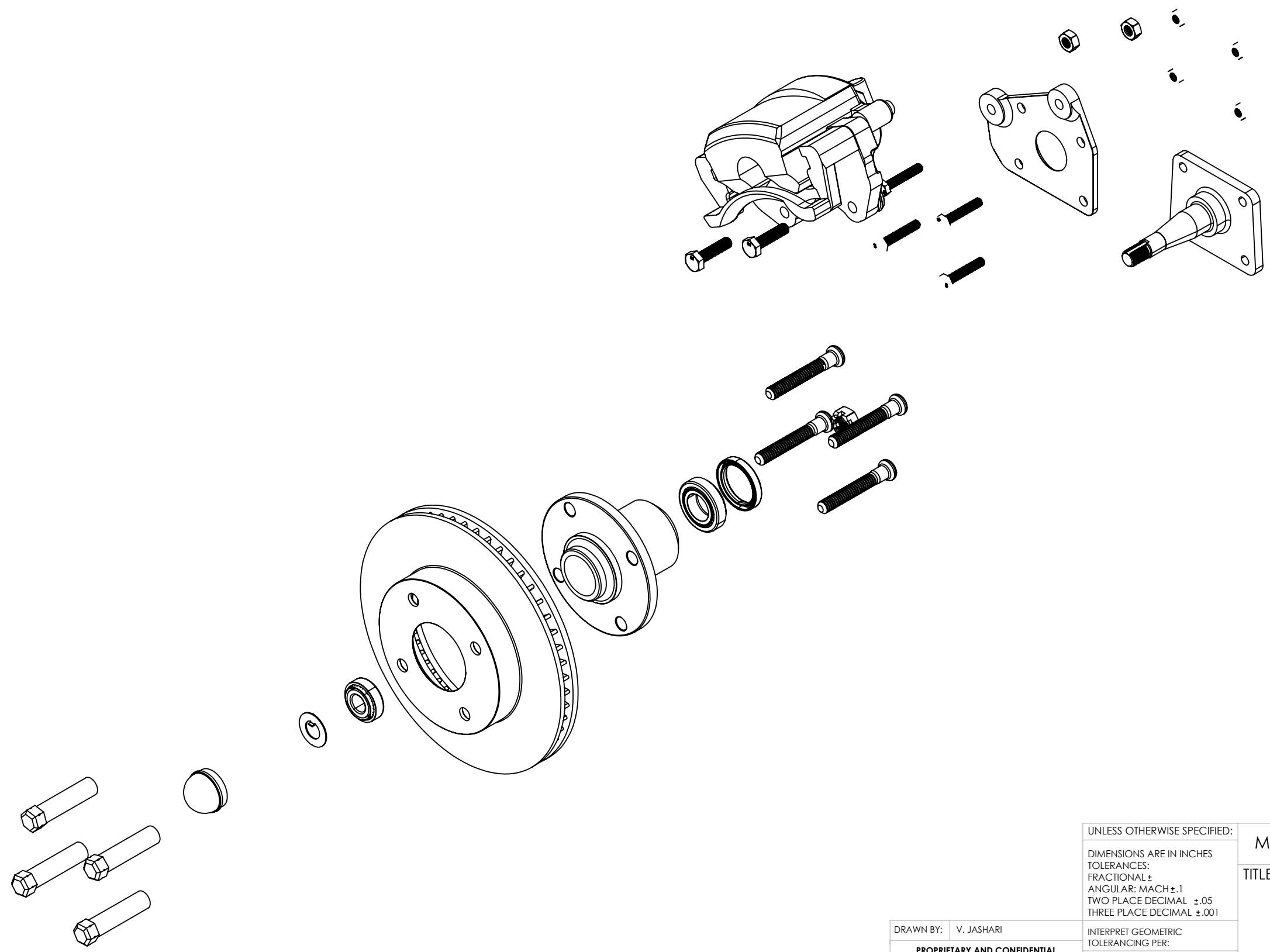
1

B

B

A

A



UNLESS OTHERWISE SPECIFIED:		Manufacturing and Automation	
DIMENSIONS ARE IN INCHES TOLERANCES: FRACTIONAL ± ANGULAR: MACH ±.1 TWO PLACE DECIMAL ±.05 THREE PLACE DECIMAL ±.001		TITLE: Disc Brake Kit	
DRAWN BY: V. JASHARI		INTERPRET GEOMETRIC TOLERANCING PER:	
PROPRIETARY AND CONFIDENTIAL THE INFORMATION CONTAINED IN THIS DRAWING IS THE SOLE PROPERTY OF DREAMTEAM INC. ANY REPRODUCTION IN PART OR AS A WHOLE WITHOUT THE WRITTEN PERMISSION OF DREAMTEAM INC IS PROHIBITED.		MATERIAL	
		FINISH	
		DO NOT SCALE DRAWING	
SIZE	DWG. NO.	REV	
B	Exploded View		
SCALE: 1:4		SHEET 4 OF 4	

4

3

2

1